

Tilda

*Real impact through
shared learning*

Impact Report 2025



Welcome to our 2025 Impact Report

At Tilda, our ambition is to be one of the most trusted and responsible rice producers in the world. This drives our commitment to helping to protect the planet and making a positive social and economic impact.

We're evolving how we communicate our sustainability journey to make it more transparent and accessible.

Alongside a shorter PDF report, we have developed a dedicated sustainability microsite, which will provide deeper insight into our progress and impact from 2026.

sustainability.tilda.com



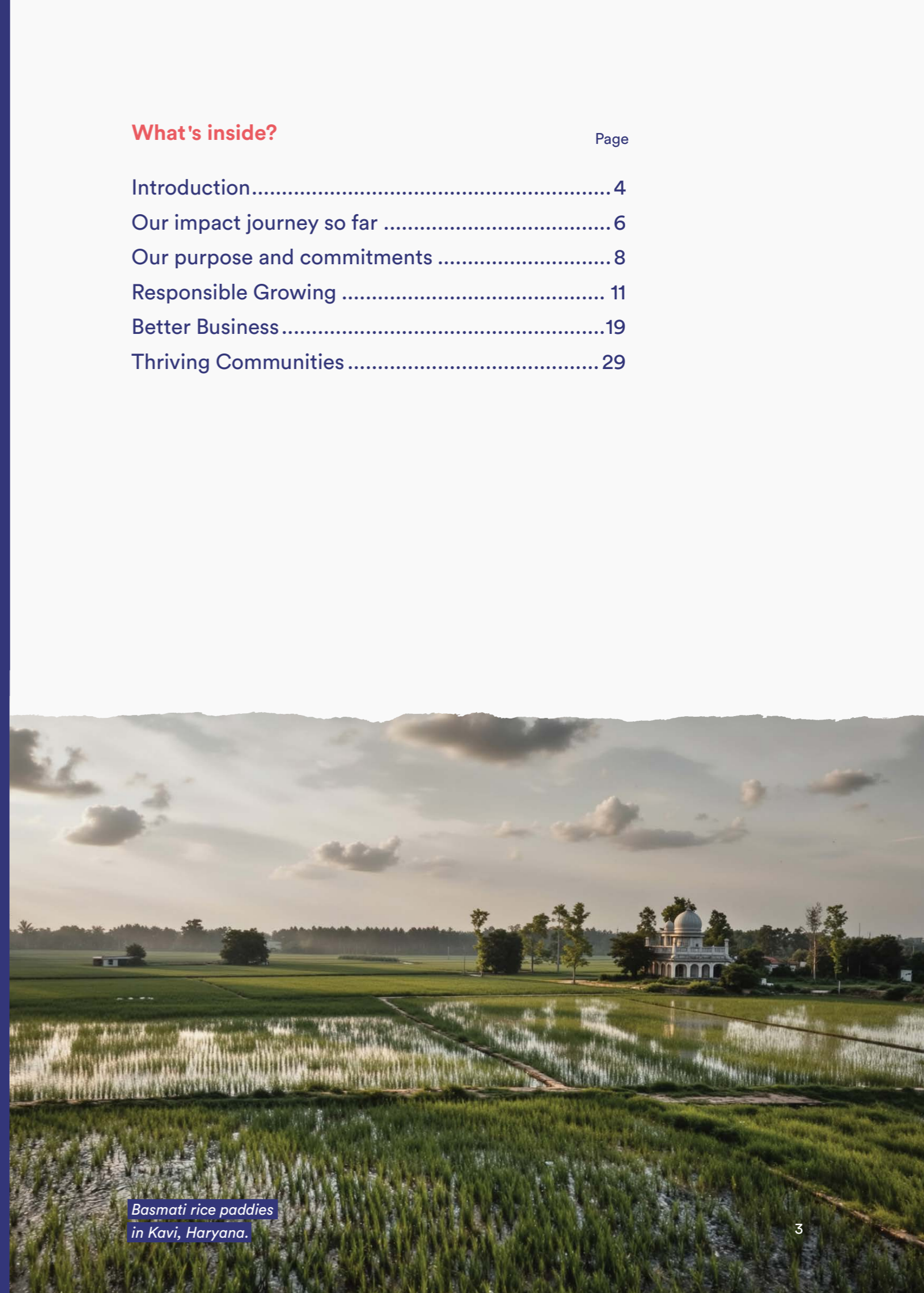
Supply Chain Sustainability Project of the Year

Cover image: Bohti Devi has been farming with Tilda since 2017 and proudly participates in our basmati rice sustainability programme.

What's inside?

Page

Introduction.....	4
Our impact journey so far	6
Our purpose and commitments	8
Responsible Growing	11
Better Business	19
Thriving Communities	29



Basmati rice paddies
in Kavi, Haryana.

Introduction

Over fifty years, Tilda has grown from a small family-run business to one that employs around 300 people in the UK, supports the livelihoods of thousands of basmati farmers and serves communities worldwide.

Proud to be a B Corp

Our ambition is to be one of the most trusted and responsible rice producers in the world. To live up to this ambition, we must be clear and transparent about our impact.

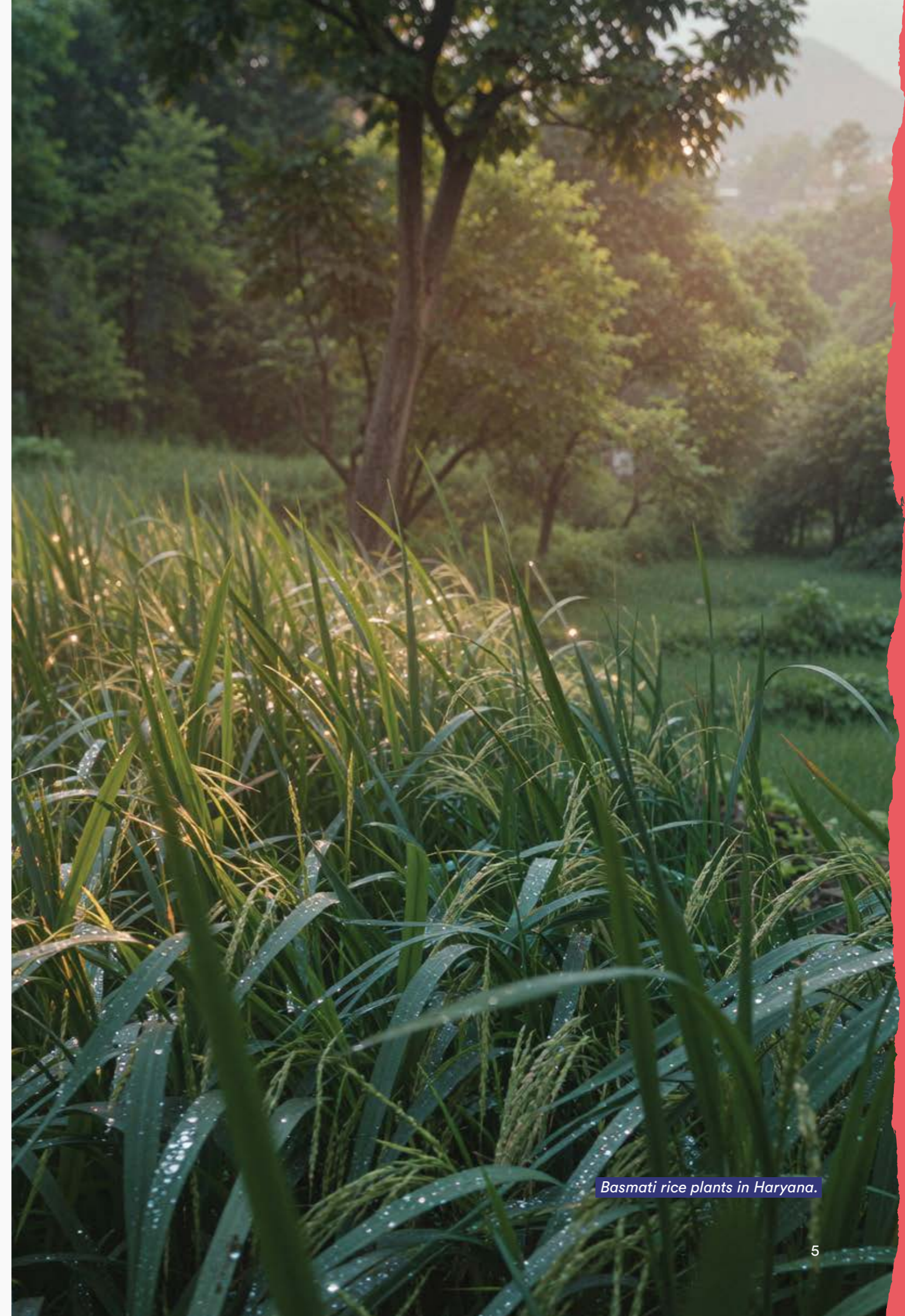
In September 2023, we celebrated becoming the first B Corp-certified rice miller in the UK. It continues to be a challenging and inspiring journey as we aim to drive positive impact in the rice industry and beyond.

This year, we will complete the recertification process aligned with the new B Lab standards which take effect in 2026.



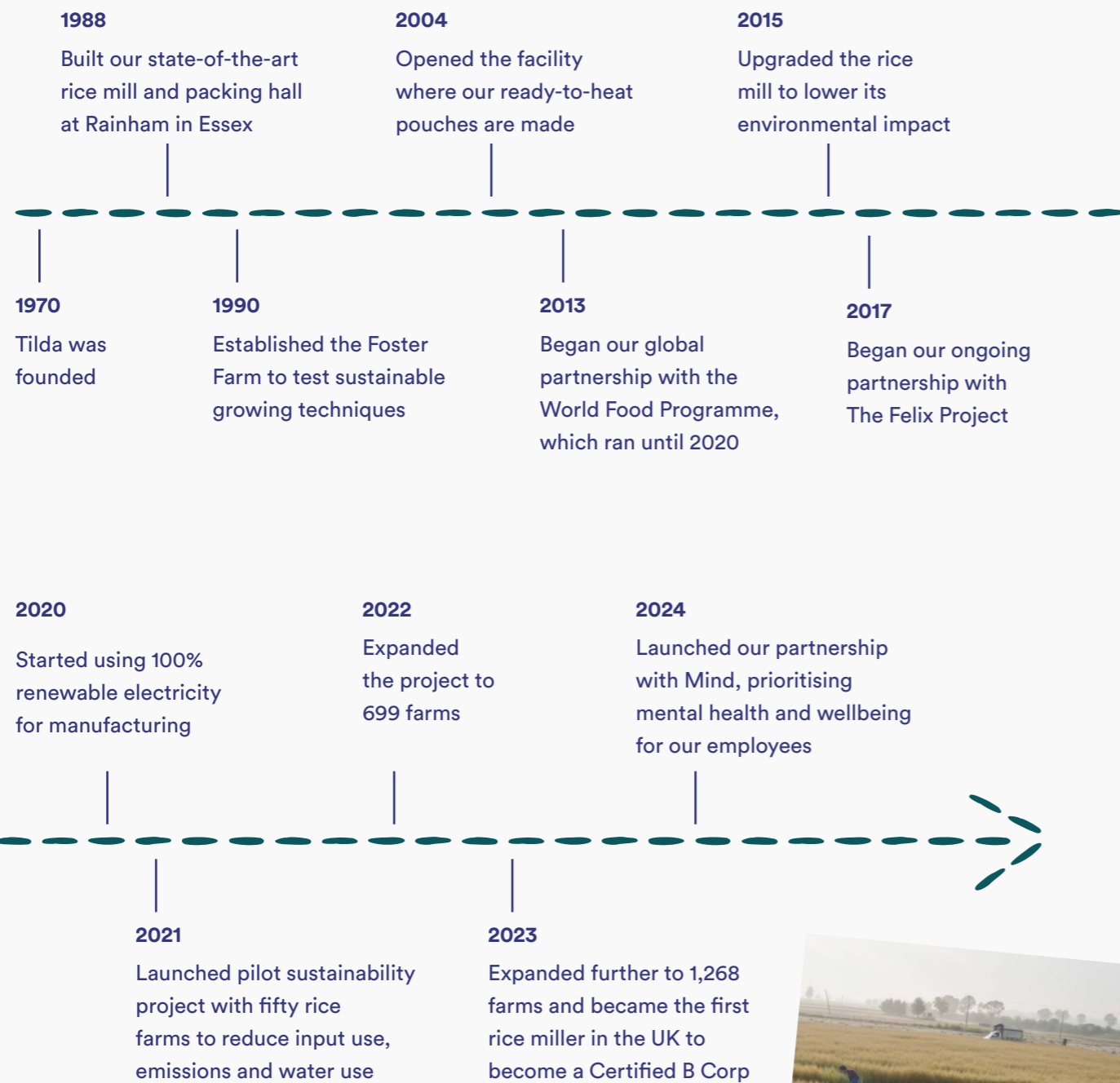
“Rice is a key staple for billions of people, but traditional cultivation methods contribute significantly to climate change. Our work shows that it is possible to produce rice in a more environmentally sustainable way – and that it is also economically sustainable or beneficial for farmers. Through collaboration with our expert partners, we’re showing not only what can be achieved in northern India, but also potential for the entire global rice industry to reduce its climate impact.”

Jean Philippe Laborde, Managing Director of Tilda



Basmati rice plants in Haryana.

Our impact journey so far...



Our impact in 2025

3,840

progressive farms joined our Sustainable Farming Project, covering 15,314 hectares.

↓ 26%

less water used to irrigate the crop per tonne of rice produced.
(2023 - 2025, compared to traditional techniques).

↓ 36%

lower CO₂e emissions on average per tonne of rice produced.
(2023-2025 compared to traditional techniques)

3.7 million

Just under 3.7 million meals worth of rice were produced in partnership with The Felix Project.

136,000

Over 136,000 nutritious school meals provided to children around the world with Mary's Meals.

Our purpose is to grow a future where life in all its flavours can thrive.

We are working to embed purpose in everything we do. From responsibly growing our ingredients to serving communities, we're embracing a better way to do business – making tasty products and helping to create a future where all can thrive.

Our Strategy:



Responsible growing

Creating a responsible supply chain by supporting farmers and reducing the environmental impacts of growing high-quality ingredients.

- Continue supporting basmati farmers and sharing learnings to promote further adoption of alternate wet and dry (AWD) irrigation techniques and additional emission-reduction practices, such as bio-fertilisers, direct seeding of rice and the use of solar energy for pumping irrigation water.
- Continue to further develop and refine a science-based approach to data collection and verification in collaboration with external experts to accurately assess and reduce farm-level GHG emissions.
- Maintain our programme of assistance to enable rice farmers to achieve even higher agricultural production standards, whether or not they sell their rice to us.



Better Business

Embracing a better way to do business by focusing on impact and transparency as an employer, manufacturer and certified B Corp.

- Maintain 100% electricity from renewable sources, invest in technology to reduce manufacturing emissions and support the Capital Hydrogen project.
- Maintain our commitment to the UK Food Waste Roadmap to reduce food waste by 50% by 2030.
- Introduce recycle-ready dry rice packaging for the roll-out of kerbside collection in the UK and continue to work closely with our ready-to-heat packaging suppliers who are at the forefront of trialling recyclable packaging formats.
- Work towards zero reportable safety incidents (RIDDOR) and a year-on-year reduction in our accident frequency rate (AFR).
- Continue to deliver Mental Health Awareness training for all our people managers.



Thriving Communities

Celebrating culture and sharing the flavours of the world with our customers and communities – helping to make lives happier, fuller and healthier.

- Help tackle hunger and food poverty through our flagship partnership with The Felix Project.
- Educate and inspire communities to support good nutrition and careers in food through our partnerships with Eat Them to Defeat Them and Zest Quest Asia.
- Embrace diversity of culture and cuisine, celebrating cultural holidays and calendar moments throughout the year.
- Continue donating nutritious meals to children around the world through Mary's Meals.

Transplanting basmati rice seedlings in Uttar Pradesh.



Responsible Growing

A more sustainable future for rice

At the agricultural end of our supply chain, in the paddy fields of northern India, we partner with thousands of basmati farmers to pioneer more sustainable ways of producing rice.

We're working to build a more sustainable rice supply chain by partnering with the farmers who grow our basmati in Haryana and Uttar Pradesh.

Since its launch in 2021, our Responsible Growing Programme has expanded rapidly, creating measurable benefits for people, nature and the climate.

Together with farmers, we're tackling climate change, protecting biodiversity and improving livelihoods – with intensified efforts to cut water and fertiliser use and reduce greenhouse gas emissions.

In return for meeting our quality standards, farmers receive extension advice and equipment such as AWD irrigation pipes, sensors and pheromone traps. This supports them to cut costs, increase yields and boost incomes.

There's no obligation to sell the rice to Tilda, but those who do receive a premium price that reflects the added risks of growing basmati to our higher standards.

We align with the UN Food and Agriculture Organisation's definition of **sustainable agriculture**: meeting the needs of current and future generations while ensuring profitability, environmental health and social and economic equity.

Tilda has spent three years trialling and scaling regenerative practices, and we are now able to show not just progress but proof of impact.

The evidence we can provide shows that, when we work hand in hand with farmers, sustainable rice production is possible – and scalable.

Changing how rice is grown in paddy fields

Traditional rice farming involves growing rice in permanently flooded fields. This uses 3,000 – 5,000 litres of water per kilogram of rice produced and generates large amounts of methane – a potent greenhouse gas.

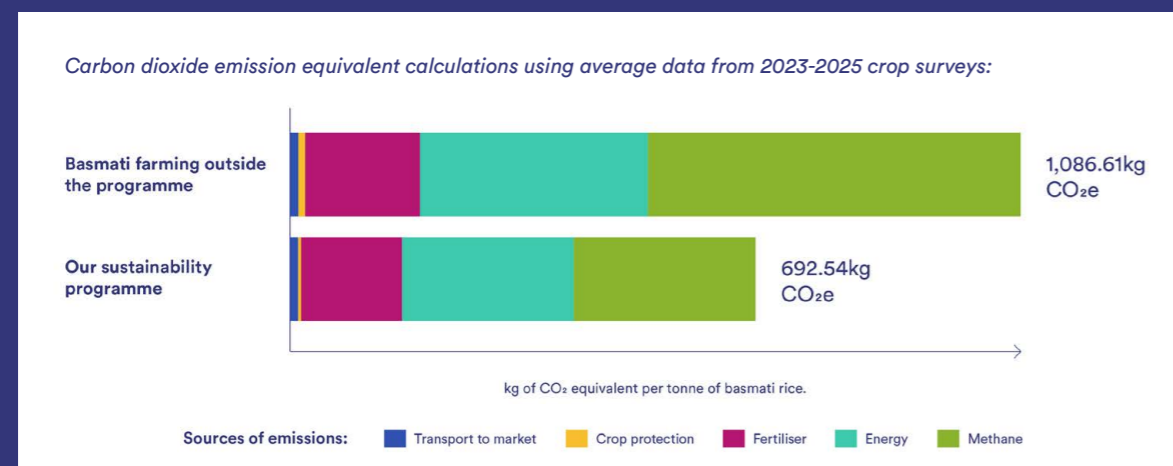
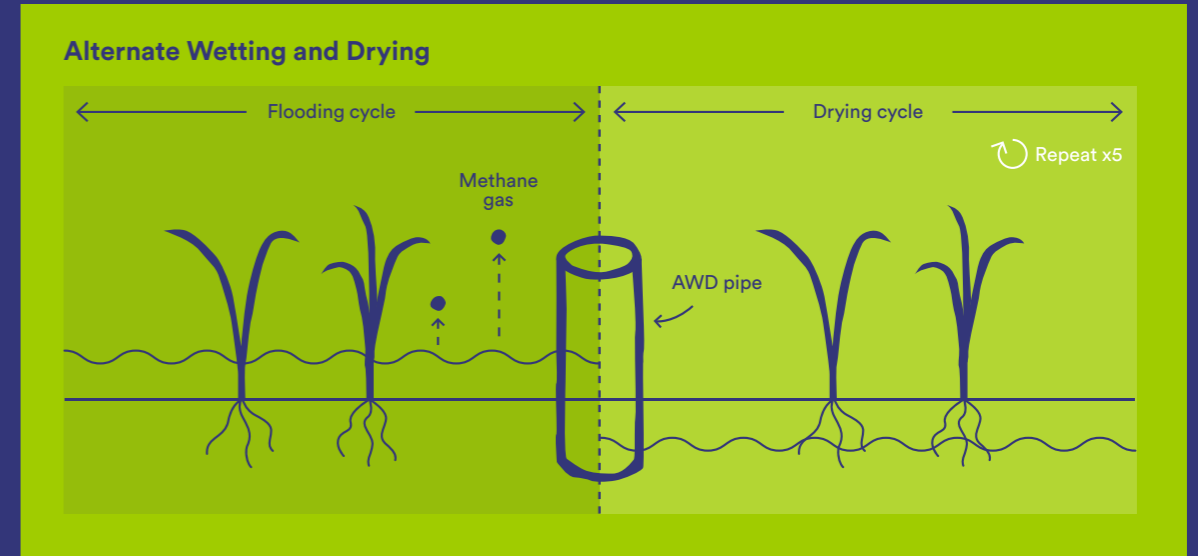
A more sustainable approach – developed by the International Rice Research Institute – is called Alternate Wetting and Drying (AWD). This irrigation technique reduces the number of flooding cycles, cutting methane emissions and water use.

Scientific (peer-reviewed) studies (referenced by the IPCC in 2019) show that AWD typically reduces methane emissions by 45% compared to traditional methods. There is an expectation amongst a number of scientists that adopting AWD may be capable of delivering even higher levels of methane emissions than this default 45%. Our goal is to see if this is possible in the regions where we source basmati from and to obtain the evidence to support it.

Our goal is to encourage all our basmati farmers – and others beyond our supply chain – to adopt techniques like AWD for a more climate-friendly future.

Progress spanning the 2023 to 2025 crop years

- More than doubled the number of farms in the sustainability programme, reaching 3,840 farms covering 15,314 hectares, greatly expanding both scale and impact.
- Farm incomes increased by 7.5% on average per year compared to farms outside the sustainability programme, due largely to higher yields. There was a 6.9% average increase in production for farms using AWD.
- CO₂e emissions fell by 22.7 million kg on average per year. This is equal to taking 15,050 UK cars off the road for a year and represents a 36% reduction per tonne of rice compared to farms outside the sustainability programme.
- Total electricity use was reduced by 5.64 million kwh on average per year. This is equal to the annual consumption of 2,090 UK households.
- Total irrigation water use fell by 36.9 billion litres of water, approximately equal to the annual consumption of about 711,210 UK households.
- Fertiliser use was 21% less per tonne of rice on average and pesticide use was cut by two-thirds (amount applied), with a 70% environmental impact indicator reduction.



The next challenge: Nitrous Oxide

We now know that, while AWD significantly reduces methane and water use, up to 10-15% of that benefit may be offset by increased nitrous oxide (N₂O) emissions – another potent greenhouse gas. This occurs when fields are no longer continuously flooded and the soil is increasingly exposed to oxygen, which encourages microbes to release N₂O – especially in the presence of fertilisers applied to boost crop yields.

Since fertilisers are essential for maintaining yields, the challenge is to reduce N₂O emissions without compromising productivity. That means using fertiliser more efficiently and more strategically.

This knowledge is driving the next step in our climate journey: supporting pioneering research into ways to reduce nitrous oxide emissions in rice farming.

Healing the soil with fungi

Field data from the past three years of the Tilda Responsible Growing Programme shows that farmers involved in the programme have achieved higher yields, while reducing fertiliser use by over 20% per tonne of rice on average across the three years 2023-25.

Now, we are collaborating with research scientists to test bio-fertilisers that contain fungi. Research by the University of Cambridge Crop Science Centre (CUCSC) and the International Rice Research Institute shows that water-saving techniques like direct seeding can support the growth of beneficial soil fungi – known as arbuscular mycorrhizal (AM) fungi. These fungi help plants absorb nutrients more efficiently, acting as a natural bio-fertiliser, meaning farmers could further reduce synthetic fertiliser use without compromising yields.

Cambridge scientists believe AM fungi are also likely to flourish under AWD irrigation systems – with promising potential. An increase in fungi could reduce N₂O and nutrient run-off, as well as improving soil quality – a suite of benefits that contribute to “healing the soil.”



Supporting ground-breaking research in the field

Tilda launched a pilot research project in collaboration with the CUCSC and Ebro India. The study aims to explore whether water-saving AWD techniques used on farms promote the growth of AM fungi.

The objective is to compare data from AWD farms with farms using traditional continuous flooding methods.

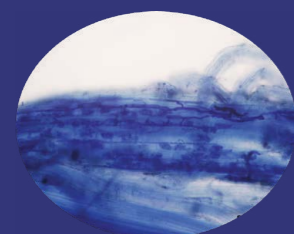
The first stage of research, carried out in 2025, involved collecting and testing soil and root samples from 31 farms using microbiome sequencing. Samples were taken throughout the growing season and analysed for the presence of AM fungi. Initial microscope-based testing suggests that AM fungi are present in AWD soils but largely absent in continuously flooded fields. Full testing to confirm whether bio-fertilisers also increase AM fungi levels on AWD farms will take place post-harvest.

Crop yields are also being recorded. Initial findings show that crops that used synthetic fertilisers supplemented with bio-fertilisers have stronger root growth, improved plant performance and 5-15% higher yields than crops that used only synthetic fertilisers.

Looking ahead, we will carry out follow-up research in 2026 to strengthen the evidence base and move the work closer to practical application at scale. Our aim is to generate robust, actionable data to support the wider adoption of bio-fertiliser use alongside AWD across commercial basmati farms, starting with the 2027 crop year.

“These early results are extremely encouraging. We’ve confirmed that AM fungi naturally associate with Pusa basmati rice, and that bio-fertilisers can enhance root development, crop vigour and deliver higher yields. Our next step is to quantify these benefits at scale and ensure that any inputs used are more sustainable.”

Dr Emily Servanté, Postdoctoral Research Associate at University of Cambridge



Arbuscular mycorrhizal fungi identified in roots of basmati rice grown under AWD with bio-fertiliser

Ensuring a transparent supply chain

Beyond rice, we make our products using only high quality natural ingredients – sourced from suppliers we’ve worked with for many years. Our long-standing partners are committed to meeting our high standards of ethics and transparency.

Supplier Code of Conduct

Our Supplier Code of Conduct sets clear ethical standards which we expect all our suppliers to adhere to, including:

- Compliance with relevant laws and regulations.
- Safe and fair working conditions.
- Respect for human rights and prohibiting enforced labour and child labour.
- Minimising environmental impacts.

We use Sedex Global, a global auditing platform, to assess suppliers’ compliance with our standards and ensure transparent reporting. This gives us clear visibility of suppliers’ ethical audit performance, enabling us to identify issues and take action where needed.

In the last reporting round in 2025, we achieved a Sedex score of 100% for ethical performance and transparency in our supply chain.



The Tilda rice mill on the River Thames in Rainham, Essex.



Better Business

Sustainable manufacturing

We're constantly looking for ways to reduce the environmental impact of making our products. Our manufacturing processes are designed to deliver the highest standards of food safety, quality and flavour, while using less energy and water, cutting emissions and reducing food waste.

Everything we do at our rice mill and factory in Rainham, Essex, is closely managed, with ongoing investment in state-of-the-art technologies.

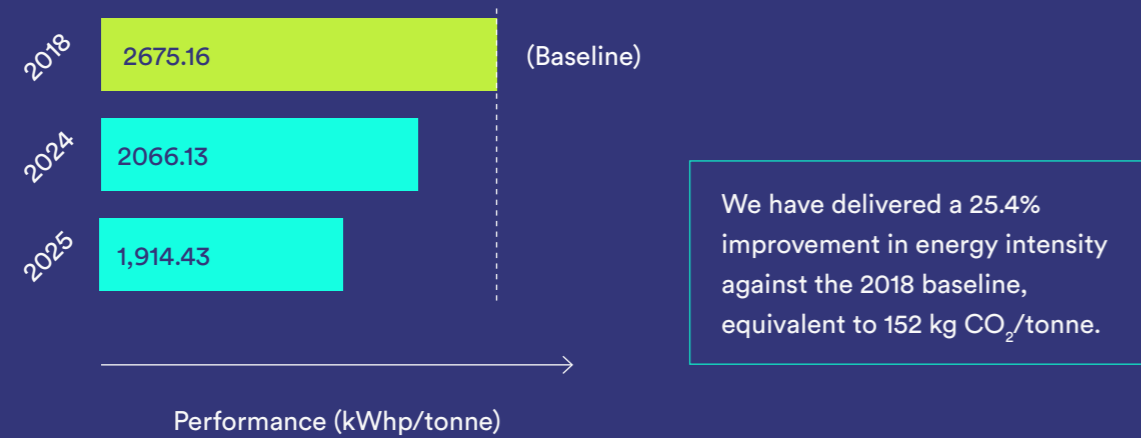
Reducing our carbon footprint

Our total carbon footprint calculation includes Scope 1 and Scope 2 emissions, covering the direct emissions from our two manufacturing sites and head office, as well as the emissions associated with the energy we purchase.

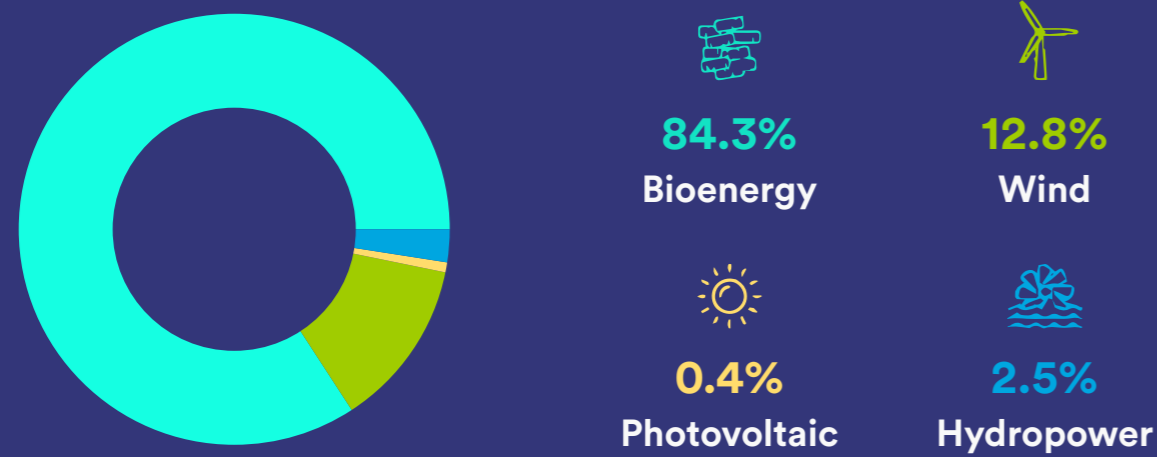
At our Jazz factory, where we make our ready-to-heat pouches, we have reduced emissions by 29% CO₂e against the 2018 baseline (against a government target of 10%). We invested in a voltage optimisation project that enabled us to reduce our operating voltages by 6% across all incoming mains power, with the potential to reduce them further in the future.

At our rice mill, which is less carbon-intensive, we achieved a 21% CO₂e reduction (against a government target of 5%). This was mainly achieved through investing in state-of-the-art technology, including more efficient compressors and LED lighting. We upgraded our largest milling line, which increased output by 2%, and our conveyor motors, which reduced energy consumption.

Energy intensity of our UK factories:



Energy source breakdown in 2025:



100% renewable electricity

We have used 100% electricity from renewable sources for our manufacturing since 2020.

This means zero carbon emissions are generated through electricity consumption at our UK sites. Our power purchase agreement (PPA) is independently verified each year.

Scope 3 emissions

We calculated our Scope 3 emissions for the first time in 2023, following the GHG Protocol standards for upstream and downstream value chain activities. Scope 3 emissions include emissions from our supply chain, transportation, waste, use of our products and other sources.

Tilda's total Scope 3 emissions amounted to 207,884 tonnes of CO₂e with the greatest contributor to this being the rice that we source from farmers.

Working towards net zero

We prioritise reducing emissions rather than relying on offsetting. Reaching net zero will depend on cutting energy use, switching to cleaner fuels and investing in low-carbon technologies. We have five electric vehicle charging points on site.

Fully decarbonising our manufacturing will require moving from gas to electricity and hydrogen when supply networks are available. We support the Capital Hydrogen project, led by Cadent – a long-term programme aimed at transitioning the Thames Estuary area to hydrogen. The planned pipeline – part of the wider Capital Hydrogen network – is expected to be operational around 2030.

Reducing waste

Food waste is a significant driver of climate change. Tilda is a signatory to the UK Food Waste Reduction Roadmap, which aims to halve food waste by 2030. Preventing waste is our priority, and where waste cannot be avoided, we ensure it is put to good use.

No by-products from our milling process go to waste. Food waste is reused wherever possible, including as animal feed, with remaining waste sent to anaerobic digestion as part of a circular system. In 2025, 100% of our waste was diverted from landfill and 80% was recycled.

Managing our water impacts

We use a closed-loop evaporative system to capture, cool and recycle water condensate from steam generation, reducing both water use and energy losses.

Our wastewater is managed in line with trade effluent consents and is treated and recycled by our wastewater partners.



Evolving our packaging

High-quality packaging is vital to ensure our products reach consumers in perfect condition and to extend their shelf-life, avoiding food waste. We're constantly evolving our packaging to reduce its impacts, cut down on plastic and enable recycling.

Addressing the plastic challenge

We work hard to optimise our packaging, aiming to ensure it is lightweight and designed to safeguard product quality, safety and shelf-life. We engage with our supply partners to maintain a continuous improvement plan that aims to ensure all our packaging is at the optimum specification.

Reducing plastic is an issue people care about deeply, and it's one we're determined to address in close collaboration with our packaging suppliers. However, eliminating plastic packaging entirely is not yet a viable option given the materials currently available. For our ready-to-heat products, plastic pouches play a critical role in protecting food quality and safety and preventing spoilage.

Moving too quickly away from plastic risks undermining these benefits - particularly if it leads to increased food waste, which would ultimately increase environmental impact.

Instead, we're taking a considered, evidence-led approach. We've set clear commitments to ensure our packaging is 100% recyclable ahead of the introduction of consistent kerbside collections across the UK in 2027.

In 2025, Tilda contributed around £700,000 funding to promote recycling under Extended Producer Responsibility legislation in the UK.

Our latest activities include:

- Transitioning to recycle-ready mono-laminate packaging for selected flagship products, including Tilda Basmati block packs and 5kg, 10kg and 20kg dry rice bags.
- Working closely with our ready-to-heat packaging suppliers to trial alternative substrates, ensuring recyclability improvements do not compromise product quality or shelf life.

Supporting the UK Plastics Pact

Tilda signed the UK Plastics Pact in 2021, a globally-recognised voluntary agreement to develop a circular economy for plastics. We have committed to meet The UK Plastics Pact commitments:

- Eliminate problematic or unnecessary single-use packaging through redesign, innovation, or alternative (reuse) delivery models.
- Ensure 100% of plastic packaging is reusable, recyclable or compostable.
- Effectively recycle or compost 70% of plastic packaging.



Caring for our team

We're driven by optimism and curiosity about food, life and people. Treating our diverse team with dignity and respect is fundamental to how we do business.

Our team brings together people from different backgrounds and cultures, each making a unique contribution to our shared purpose. We value every one of our around 300 direct employees, whose roles span manufacturing, sales, IT, HR, marketing and sustainability.

Creating opportunities to bring people together is important, particularly as we operate across two sites. Shared activities help build connection, strengthen relationships and support the development of one cohesive team.

We focus on training and equipping people to do their jobs well, with a strong emphasis on management and leadership development. This has included targeted leadership training and mental health awareness sessions, supporting managers to lead their teams with greater confidence, capability and care.

Embedding our values

Our values bring people together to strengthen our company culture and promote well-being and productivity. We are increasingly embedding the values, which were launched in 2023, into day-to-day life at Tilda. They are prominently displayed across our sites and on our website, and are actively referenced in meetings.



Community – cooperative, open-minded, team player.

We care about people across all the communities that we serve, from our own team to the farmers we partner with. We are growing a future where community can thrive.



Respect – transparent, authentic and honest.

We celebrate all cultures and champion inclusivity. This means we take diversity, equity and inclusion seriously to build trust within our team.



Ownership – responsible for our actions.

We take ownership of our impact on people and the planet. We value transparency and ensure credibility by making sure that claims are backed up with evidence and data.



Productivity – target-driven.

We are always moving forwards, looking to make progress wherever we can. We strive to meet sustainability targets and uphold our commitments.

We have established two employee working groups, one focused on embedding the values across the business, and the other on developing our approach to charity partnerships and mental health. We will be re-energising the employee working groups in 2026, bringing together people from different sites and functions to support further integration.

We are developing a new annual appraisal process aligned to the values, which will play a key role in embedding them more

deeply from 2026 onwards. We will roll out a new performance management system, representing a significant change in how performance is supported and assessed across the business. Comprehensive training will be delivered to ensure managers are confident and equipped to lead the transition successfully.

Recognition is another important part of this work. At our annual summer barbecue, colleagues nominate individuals who go above and beyond in demonstrating one of our values.

Diversity, equity and inclusion

Tilda serves diverse and multicultural communities, and diversity, equity and inclusion (DEI) within our workforce are essential ingredients for success. We are an equal opportunities employer and we do not discriminate on any grounds, including race or colour, nationality, national or ethnic origin, sex, marital status, religion, age, sexual orientation or disability.

Our most recent Gender Pay Gap Report, covering 2024, showed that our median hourly gender pay gap was 3.7%, with an average gap of 16.7%. This gap is not the result of women and men being paid differently for the same roles, but reflects a higher proportion of men currently holding more senior positions. In the same year, 90.4% of women and 88.4% of men received a bonus.

We are working to establish a more structured, values-based hiring process that promotes DEI, alongside maintaining a high level of job sharing to support flexible working opportunities.

Protecting human rights

We are committed to upholding the human rights of people involved in both our own operations and those of our supply chain.

As a member of the UK Rice Association and the All India Rice Exporters' Association, we support the eradication of modern slavery, child labour and human trafficking. We did not identify any modern slavery risks in our operations or supply chains in 2023. Read more in our Modern Slavery Policy statement on our website.



Keeping our employees safe and healthy

Protecting the safety and health of our employees and stakeholders is a top priority and we are constantly improving our Health, Safety and Environment (HSE) Management System and other critical elements to achieve the high standards of workplace safety required for international ISO 45001 and ISO 14001 certification.

We are committed to zero reportable safety incidents (RIDDOR) across both of our manufacturing sites and to a year-on-year reduction in our accident frequency rate (AFR). In 2025, we experienced one reportable incident.

“Our relationship with Mind has also focused on building internal capability. Mind delivered mental health training for our senior management team and a number of people managers throughout 2024 and 2025. This work has helped strengthen understanding, confidence and leadership around mental health across the business.”

Claire Deakin,
Head of HR at Tilda

Supporting employee wellbeing with Mind

We continue to develop our partnership with Mind, the mental health charity. In 2024, we were a major sponsor of a large public festival organised by Mind. The three-day festival brought together communities to raise awareness and open conversations around mental health. Tilda colleagues volunteered at the event and supported activities at our on-site stall.

In 2026, our partnership will focus on putting more practical support in place for our people. From January, there will be monthly on-site drop-in sessions at both of our sites, delivered by an independent mental health expert. These sessions will provide a confidential space where employees can talk openly about anything that may be affecting them – from financial concerns to wider personal challenges.

Alongside this, we are continuing to invest in training for managers, helping them to recognise early signs that someone in their team may be struggling and to feel confident in having supportive conversations.

In 2026, we plan to run Mental Health First Aider training, strengthening the support network available across the business.



Shiv Charam from Urlana Kalan.



Thriving Communities

Food connects us all and we celebrate culture and share the flavours of the world with communities, helping to make lives happier, fuller and healthier. We partner with charities to fight hunger and food poverty, to nurture young chefs and educate communities about healthy, nutritious food.

Fighting food poverty with The Felix Project

Nearly two million Londoners are struggling to access sufficient food. Responding to this hunger issue, The Felix Project is London's leading food redistribution charity which works to get food to the most vulnerable.

Tilda is one of The Felix Project's longest-term suppliers. We have worked together since its foundation in 2017 and our rice is an integral ingredient of many of the meals that are made at Felix's Kitchen every day.

In 2025, we donated over 19,000 portions-worth of rice to feed communities in need. Including the additional rice we supplied at a subsidised price, the Felix Kitchen made almost 3.7 million meals using Tilda rice.

“Thank you Tilda for your vital role in helping drive towards our vision of a London where no good food is wasted and no Londoner goes hungry”.

Charlotte Hill OBE, The Felix Project CEO



'Eat them to defeat them' Caterers' Challenge

Tilda is the proud sponsor of the Caterers' Challenge – part of the Veg Power campaign encouraging kids to eat more veg – which showcases the best in school catering. We were delighted to announce Endeavour Primary School in Andover were the 2025 Gold prize winners of the Caterers' Challenge. The school team captured the judges' attention with their space-themed experience, complete with a giant silver moon, alien veg creations and a tasty, veg-packed recipe.

Mary's Meals

Tilda is proud to support Mary's Meals by donating a school meal to children living in poverty for every bag of Brown & White sold. Mary's Meals serves nutritious school meals to children living in some of the world's poorest countries. The promise of a good meal attracts these hungry children into a classroom, giving them the energy to learn and hope for a better future.

In 2025, Tilda provided over 136,000 school meals with Mary's Meals, feeding around 700 children for a full school year. Our support for Mary's Meals has raised £65,000 since 2018.

Zest Quest Asia

Zest Quest Asia returned for another year in 2025, with the support of The Master Chefs of Great Britain. Tilda has partnered with the legendary rice master, Cyrus Todiwala and Pervin Todiwala to deliver this culinary competition, demonstrating student competitors' expertise in Asian cuisine, since 2013.

This year's 'Best Use of Rice' winners – Milton Keynes College – wowed judges with their intricate four-course menu, through thoughtful technique, cultural inspiration and use of Tilda's rice. Milton Keynes College chef team won an unforgettable Tilda Foodservice rice experience all about the fascinating journey of rice and an exclusive one-on-one cooking session with Cyrus.

The winning team of 2024, Sheffield College, embarked on a trip of a lifetime to Delhi, India, including an eye-opening visit to one of the schools supported by our charity partner, Mary's Meals!

Celebrating cultures

We live in a diverse society and believe great-tasting food and rice from around the world is a joy we all share.

We're partnering with LOVO, a non-profit organisation dedicated to engaging, equipping and inspiring women and their families. Many of these women are from minoritised communities facing diverse challenges such as poverty, unemployment, language barriers, low skills, and domestic violence.

By partnering with LOVO, we aim to make a meaningful difference in fostering a supportive and thriving community. Tilda has pledged a £10,000 donation to fund LOVO's English language programmes for a year and support their global weekly lunch initiative, celebrating flavours and cultures from around the world. This funding will enable LOVO to extend its services to even more women in need.

At the end of 2024, we unveiled a new limited-edition tin, dedicated to empowering and inspiring women and their families. Tilda and LOVO hosted a celebratory event, unveiling the limited-edition tin to over 150 attendees, including the Mayor of Southwark, Naima Ali.

“This partnership with Tilda is a significant step forward for our organisation. The funds will enable us to reach more women and provide them with the tools and support they need to overcome their challenges and lead fulfilling lives.”

**Ola Olive Stephen, Founder
and Director of LOVO**



Photography Credit

- Farmers in India – Fabien Charuau

Acknowledgement

- Graham Brookes - Independent auditor of Tilda's farm data

Tilda



Discover more online

You can read more about our approach and commitment to having a positive impact on our website and social media channels.

sustainability.tilda.com



Supply Chain Sustainability Project of the Year



Tilda



tilda.com